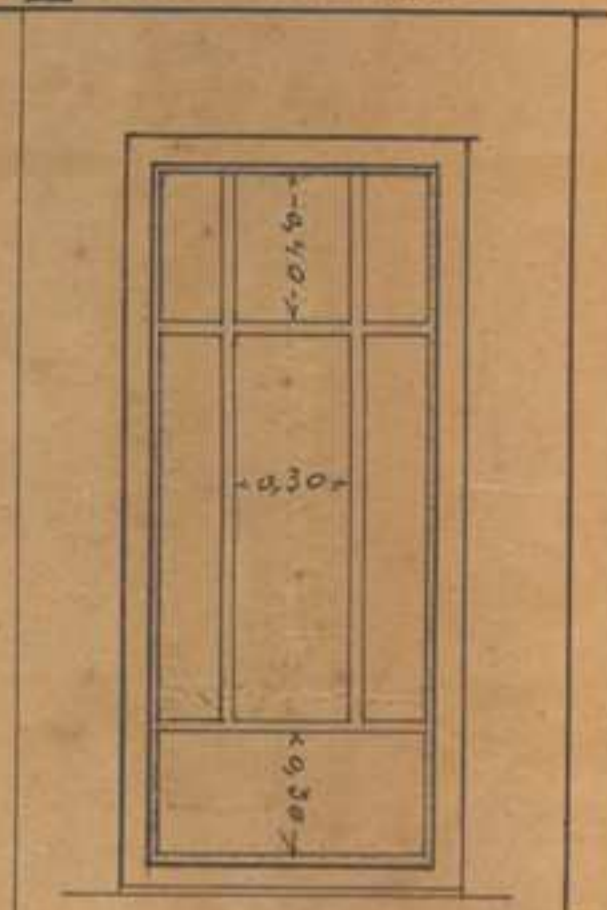


DE TALHES DOS CAIXILHOS EM FERRO
NAS ABERTURAS DAS FACHADAS LATERAIS

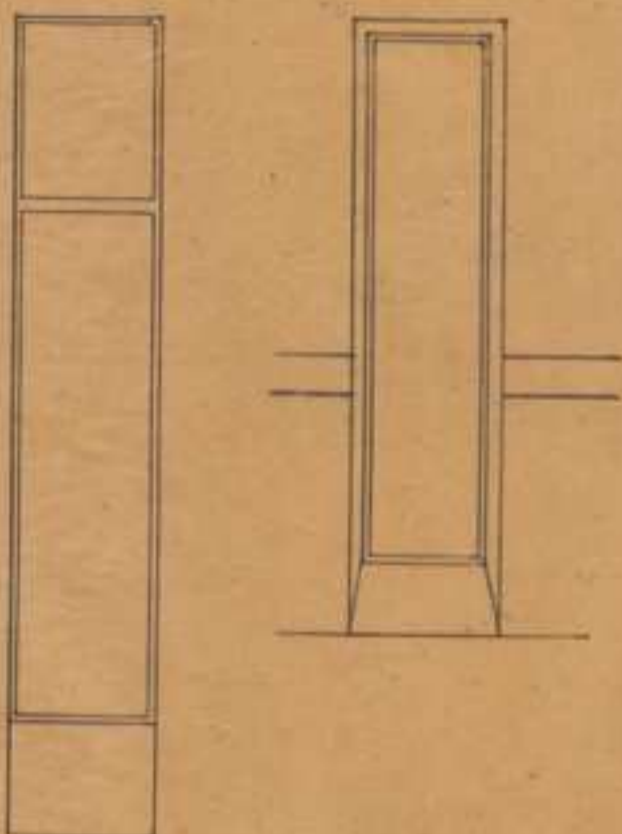
N.º 1 DO PALCO



N.º 2 DAS ESCADAS NO TRIZO



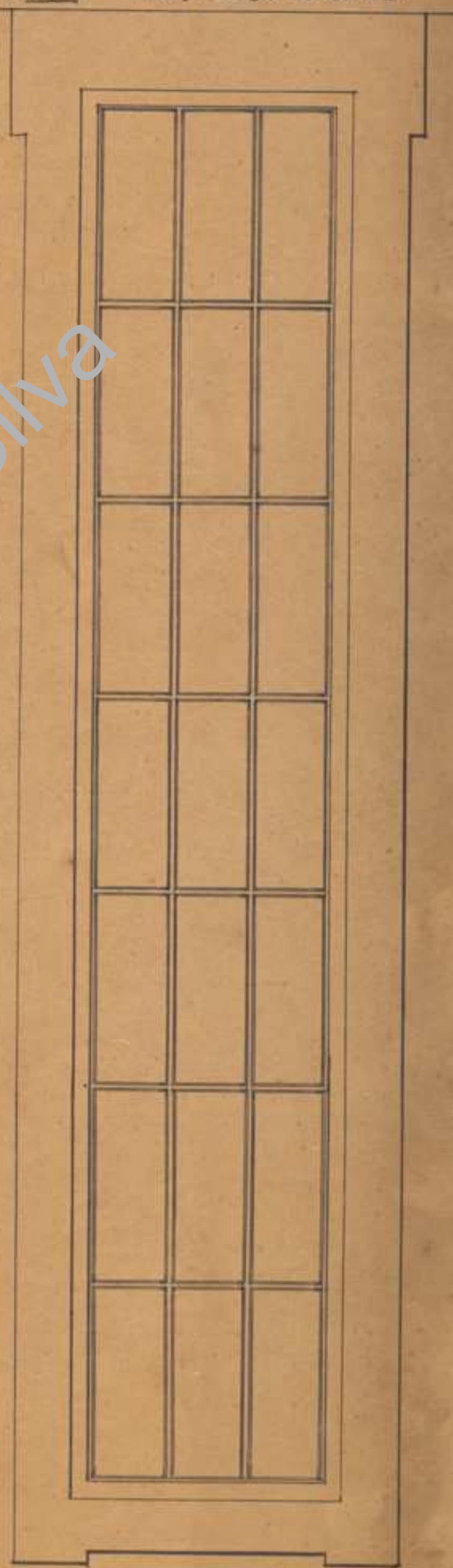
DO PALCO SOBRE A CORNISA DAS ESCADAS GALERIAS



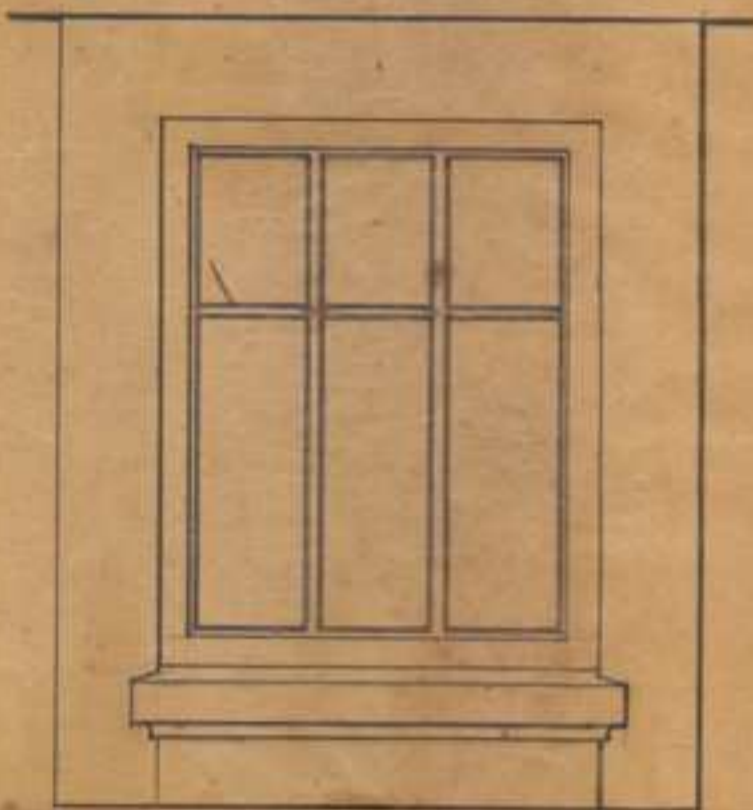
N.º 4 DO PALCO



N.º 5 DAS ESCADAS



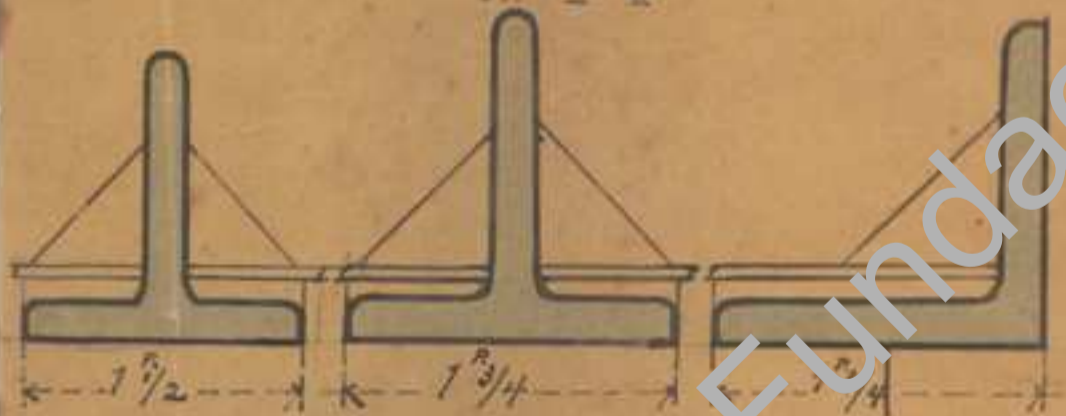
N.º 3 DAS ESCADAS GALERIAS



DO PALCO



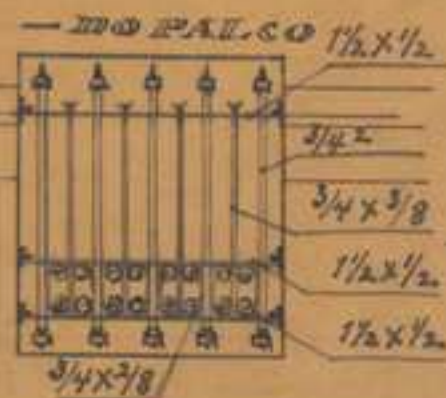
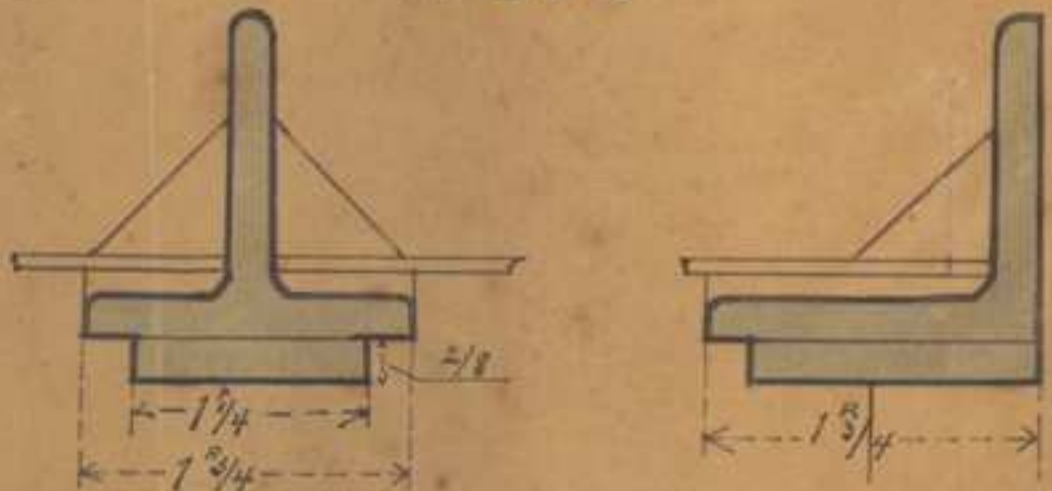
DE TALHES DOS FERROS DAS ABERTURAS
N.º 1-2



DAS PORTAS DAS GALERIAS E MUSICOS



DE TALHES DOS FERROS DAS ABERTURAS
N.º 2-3-5



ESCALA 0,05 P.M.

Part. 5-11-14
Jo. Marques da Silva
arq.º e Vila Rica